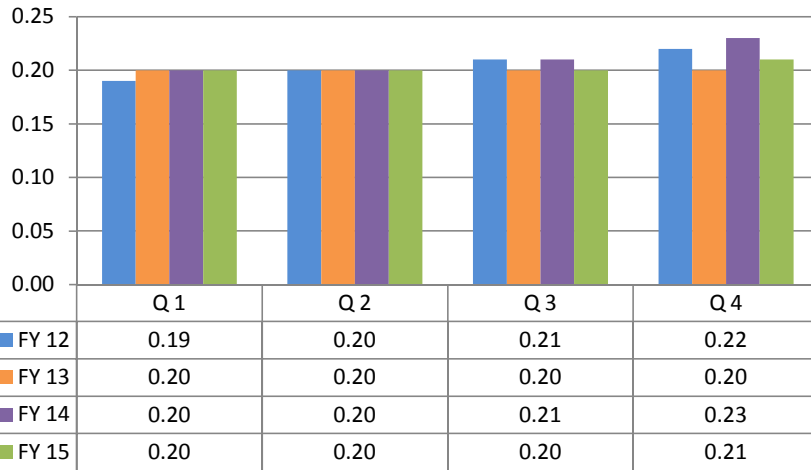


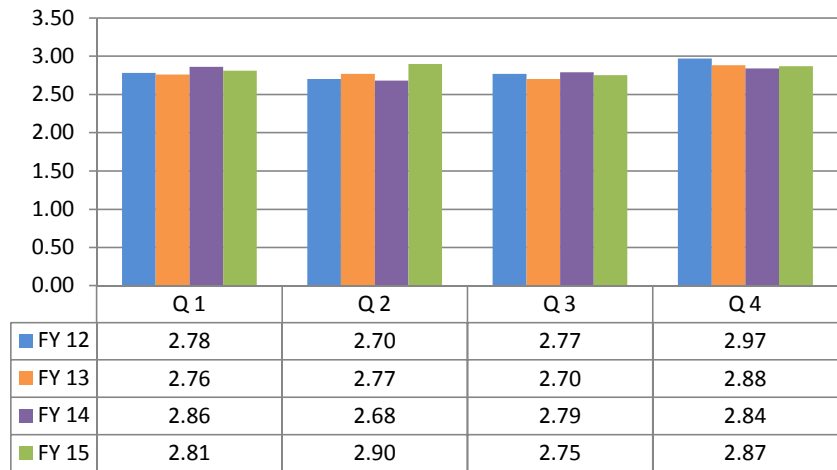
GATRA Dial-A-Ride Performance Measures FY 12 - FY 15

Group 1: Attleboro, North Attleborough, Norton, Rehoboth, Seekonk, Taunton, Berkley, Dighton, Raynham

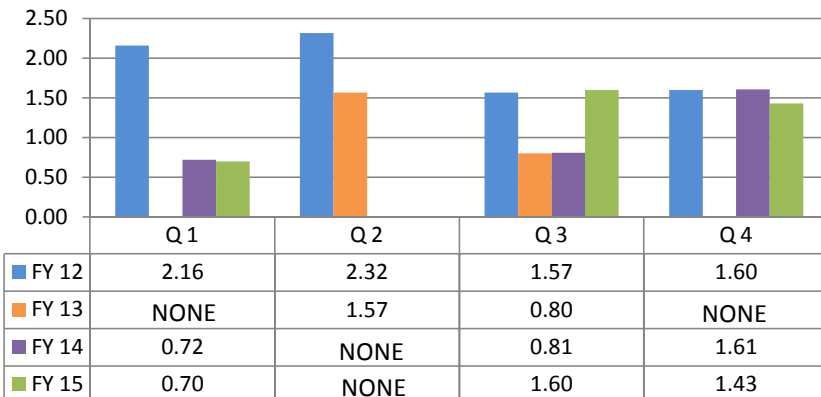
Passengers Per Revenue Mile



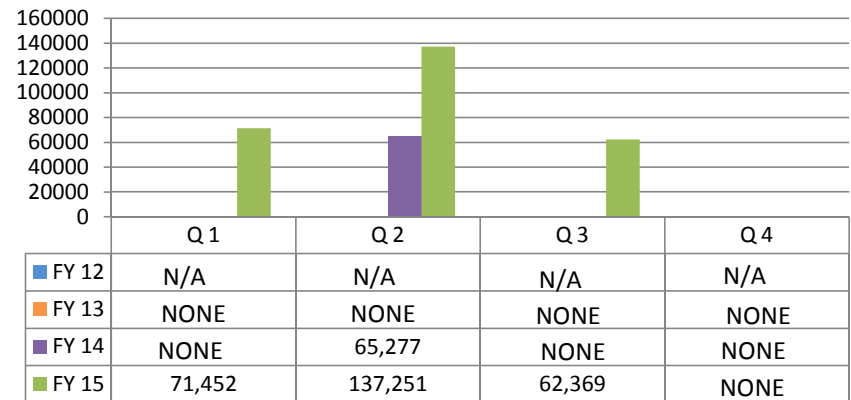
Passengers Per Revenue Hour



Preventable Accidents per 100,000



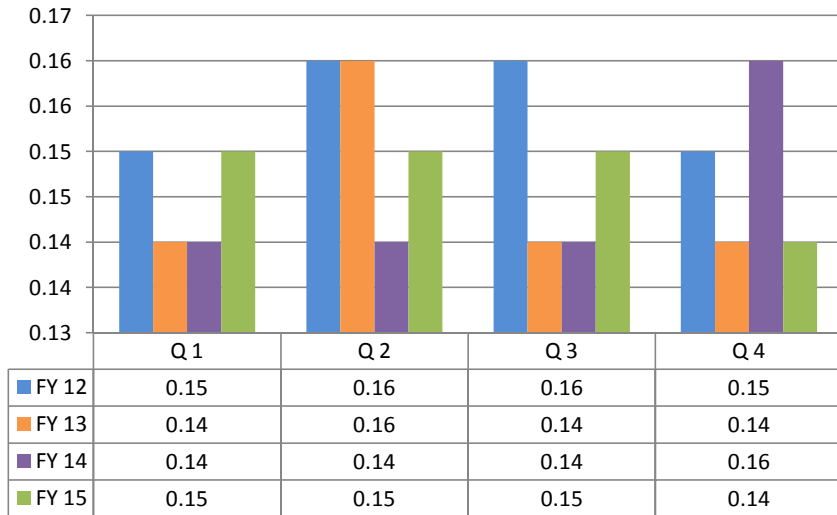
Revenue Miles between Road Calls



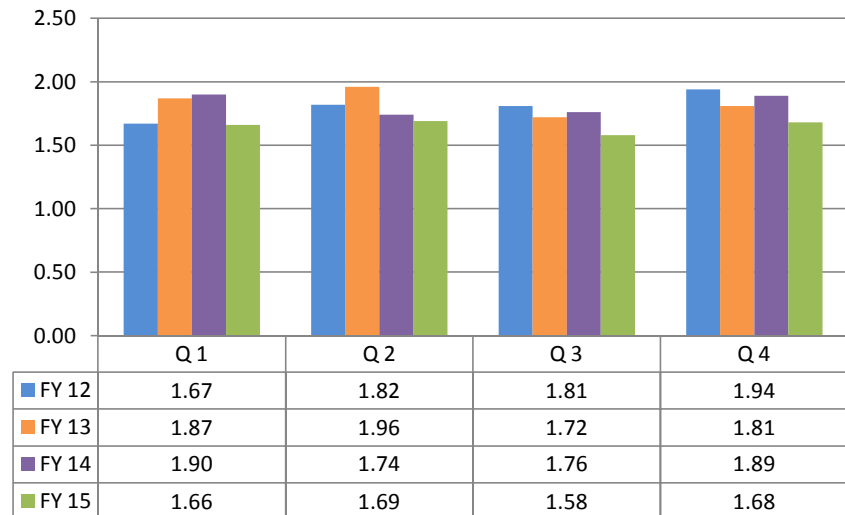
GATRA Dial-A-Ride Performance Measures FY 12 - 15

Group 2: Bellingham, Kiessling, Mansfield, Medway, Plainville, Wrentham

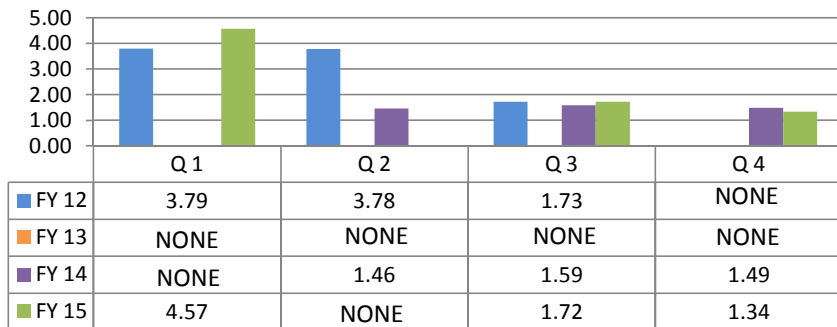
Passengers Per Revenue Mile



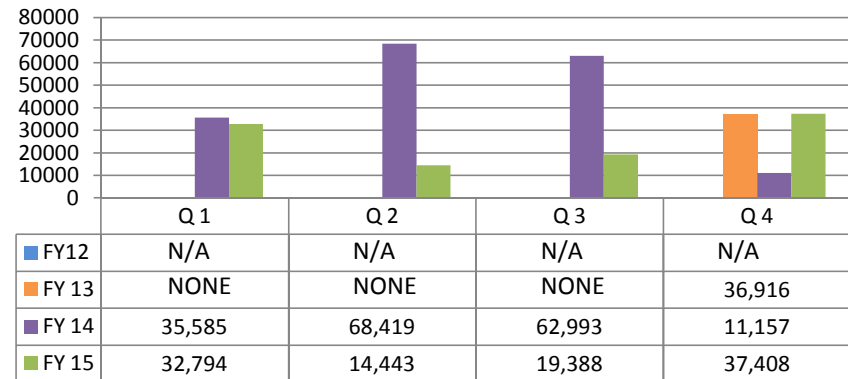
Passengers Per Revenue Hour



Revenue Miles between Preventable Accidents



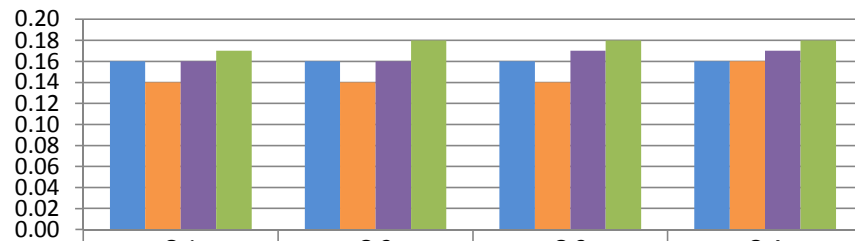
Revenue Miles between Road Calls



GATRA Dial-A-Ride Performance Measures FY 12 - FY 15

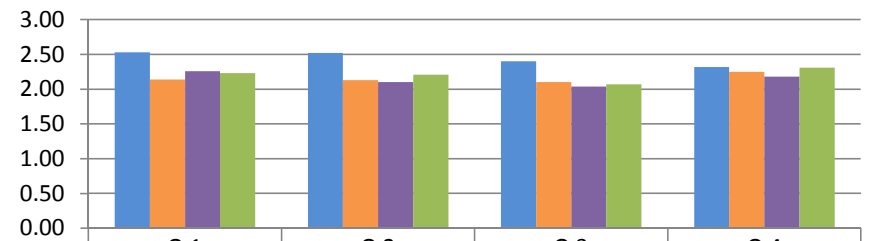
Group 3: Carver, Lakeville, Middleborough, Plymouth, Wareham

Passenger Per Revenue Mile



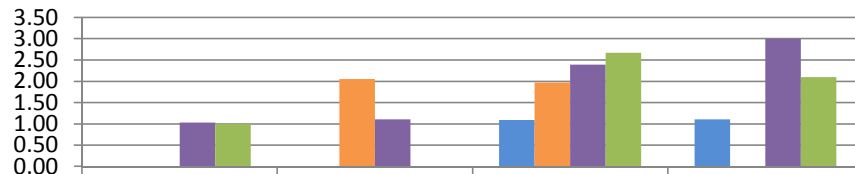
	Q 1	Q 2	Q 3	Q 4
FY 12	0.16	0.16	0.16	0.16
FY 13	0.14	0.14	0.14	0.16
FY 14	0.16	0.16	0.17	0.17
FY 15	0.17	0.18	0.18	0.18

Passengers Per Revenue Hour



	Q 1	Q 2	Q 3	Q 4
FY 12	2.53	2.52	2.40	2.32
FY 13	2.14	2.13	2.10	2.25
FY 14	2.26	2.10	2.04	2.18
FY 15	2.23	2.21	2.07	2.31

Revenue Miles between Preventable Accidents



	Q 1	Q 2	Q 3	Q 4
FY 12	NONE	NONE	1.09	1.11
FY 13	NONE	2.05	1.97	NONE
FY 14	1.03	1.11	2.39	3.00
FY 15	1.00	NONE	2.67	2.10

Revenue Miles between Road Calls

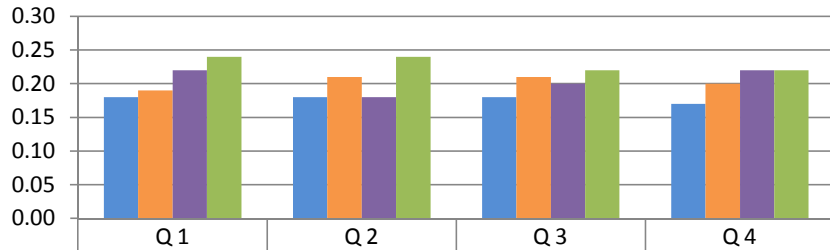


	Q 1	Q 2	Q 3	Q 4
FY 12	N/A	N/A	N/A	N/A
FY 13	NONE	NONE	NONE	105,451
FY 14	NONE	NONE	NONE	NONE
FY 15	49,783	NONE	NONE	31,750

GATRA Dial-A-Ride Performance Measures FY 12 - FY 15

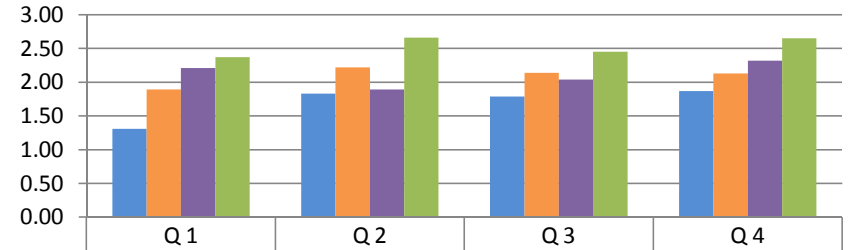
Group 4: Duxbury, Hanover, Kingston, Marshfield, Pembroke, Scituate

Passengers Per Revenue Mile



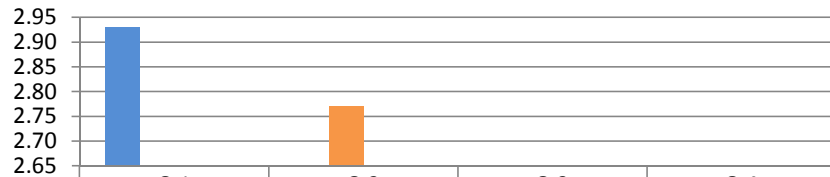
	Q 1	Q 2	Q 3	Q 4
FY 12	0.18	0.18	0.18	0.17
FY 13	0.19	0.21	0.21	0.20
FY 14	0.22	0.18	0.20	0.22
FY 15	0.24	0.24	0.22	0.22

Passengers Per Revenue Hour



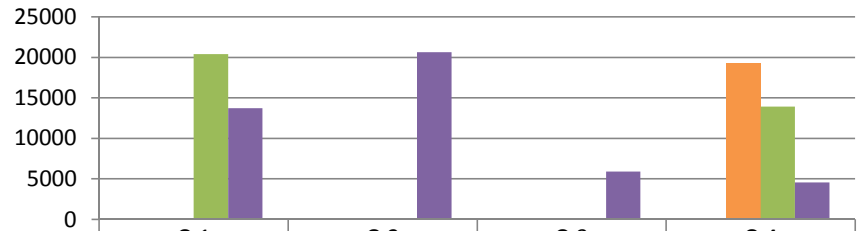
	Q 1	Q 2	Q 3	Q 4
FY 12	1.31	1.83	1.79	1.87
FY 13	1.89	2.22	2.14	2.13
FY 14	2.21	1.89	2.04	2.32
FY 15	2.37	2.66	2.45	2.65

Revenue Miles between Preventable Accidents



	Q 1	Q 2	Q 3	Q 4
FY 12	2.93	NONE	NONE	NONE
FY 13	NONE	2.77	NONE	NONE
FY 14	NONE	NONE	NONE	NONE
FY 15	NONE	NONE	NONE	NONE

Miles between Road Calls



	Q 1	Q 2	Q 3	Q 4
FY 12	N/A	N/A	N/A	N/A
FY 13	NONE	NONE	NONE	19,341
FY 14	20,381	NONE	NONE	13,921
FY 15	13,736	20,656	5,908	4,568